



TC 20

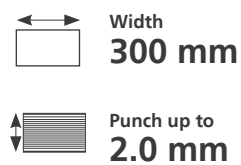
Reliable, desktop, hand thumb cut calendar punch machine producing a 20 mm thumb cut.



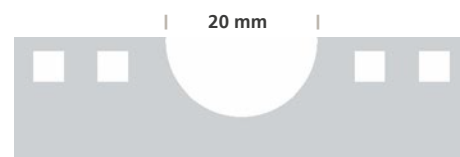
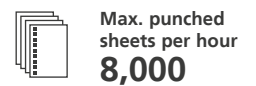
Customer benefits:

- Manually punch 20 mm calendar thumb cuts. Allows a calendar hanger to now be used in the binding
- Quick adjustment up to A3 on the short edge
- Horizontal paper feeding
- Compact simple design

Maximum:



Output:





RENZ



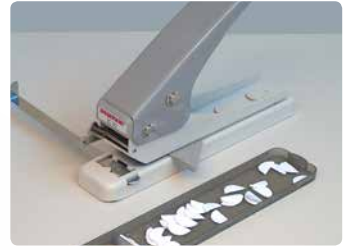
Adjust the paper side lay on the TC 20 to the correct calendar width.



Insert the calendar into the punching slot. Push the handle down.



After the handle has been pushed down, you can remove your paper which will have a 20 mm calendar thumb cut in it.



The transparent waste tray can be emptied easily by removing it from the underside of the machine.



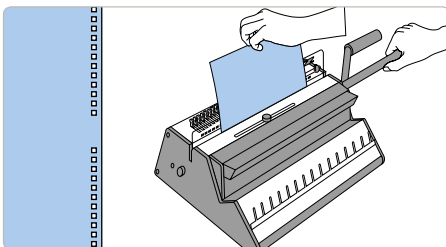
Technical data:	TC 20
Mechanical cycles per hr:	800
Min. punching width:	70 mm
Max. punching width:	300 mm
Min. unpunched length:	60 mm
Max. unpunched length:	800 mm
Max. punching thickness:	2 mm
Punching operation:	Manual
Punch pattern:	20 mm calendar thumb cut
Die type:	-
Selectable punch pins (QSA):	-
Bespoke dies:	-
Variable margin depth:	-
Die changeover time:	-
Machine dimensions L x W x H:	250 x 50 x 170 mm
Machine weight:	1.2 kg
Machine packaging dimensions L x W x H:	260 x 90 x 60 mm
Machine weight with packaging:	1.3 kg
Power requirement:	-

RENZ calendar set

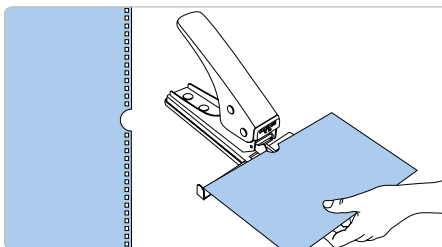


SRW 360, TC 20 and binding material for 100 calendars in A4

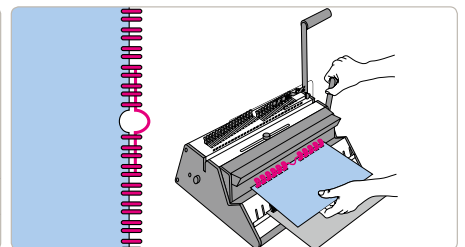
How to make a calendar...



Using the RENZ SRW 360 punch (or any RENZ punch machine with QSA technology), deselect the 3 punch pins in the middle of the calendar. Now punch the calendar normally. Remove the calendar with the 3 holes in the middle not punched out. The calendar is now ready for the RENZ TC 20 thumb cut punch.



Take the RENZ TC 20 and insert the calendar into the punch. Push the lever and punch out the 20 mm thumb cut in the middle of the calendar.



The horizontal closing mechanism of the RENZ SRW 360 allows you to bind the calendar easily together with the hanger.

Technical modifications may be made without notice. 1 mm = 10 sheets of paper, based on 80 gsm. All performance outputs are based on 80 gsm paper and may vary depending on the product type, the working environment and the operator. For best punching results we recommend a paper thickness of 1.0 - 2.0 mm.

DUPLO INTERNATIONAL
Automated Precision House
Hamm Moor Lane
Addlestone
KT15 2SD
United Kingdom

W: www.duplo-supplies.com
T: 01932 263 985
E: ecom@duplointernational.co.uk

Duplo Supplies